

# Acute Liaison Nurses for patients with learning disabilities



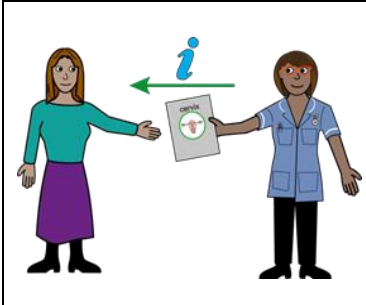
We can be contacted on: [rf-tr.acutelaiisonurses@nhs.net](mailto:rf-tr.acutelaiisonurses@nhs.net)

Or you can phone us on: 0208 216 4474 or 0207 794 0500 ext 39517



Going into hospital can be a worrying time, we are here to help you.

We can help with planning your admission to hospital and support with your discharge home.



We can help staff to make changes to make it easier for you.

We can give you easy read information to help you understand.

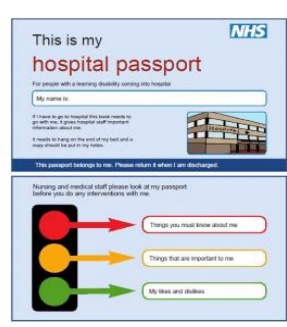


We give advice, support and training to staff about caring for people with learning disabilities.



During your hospital stay we will link with the people who are involved in your care which can include:

- You
- Your family and carers
- Hospital staff
- Your community learning disability team



Please remember to bring your hospital passport with you when you come to hospital.

The hospital passport helps staff to understand your needs.

If you do not have a hospital passport, please contact us, ask staff on the ward or your community team to ask for one.